

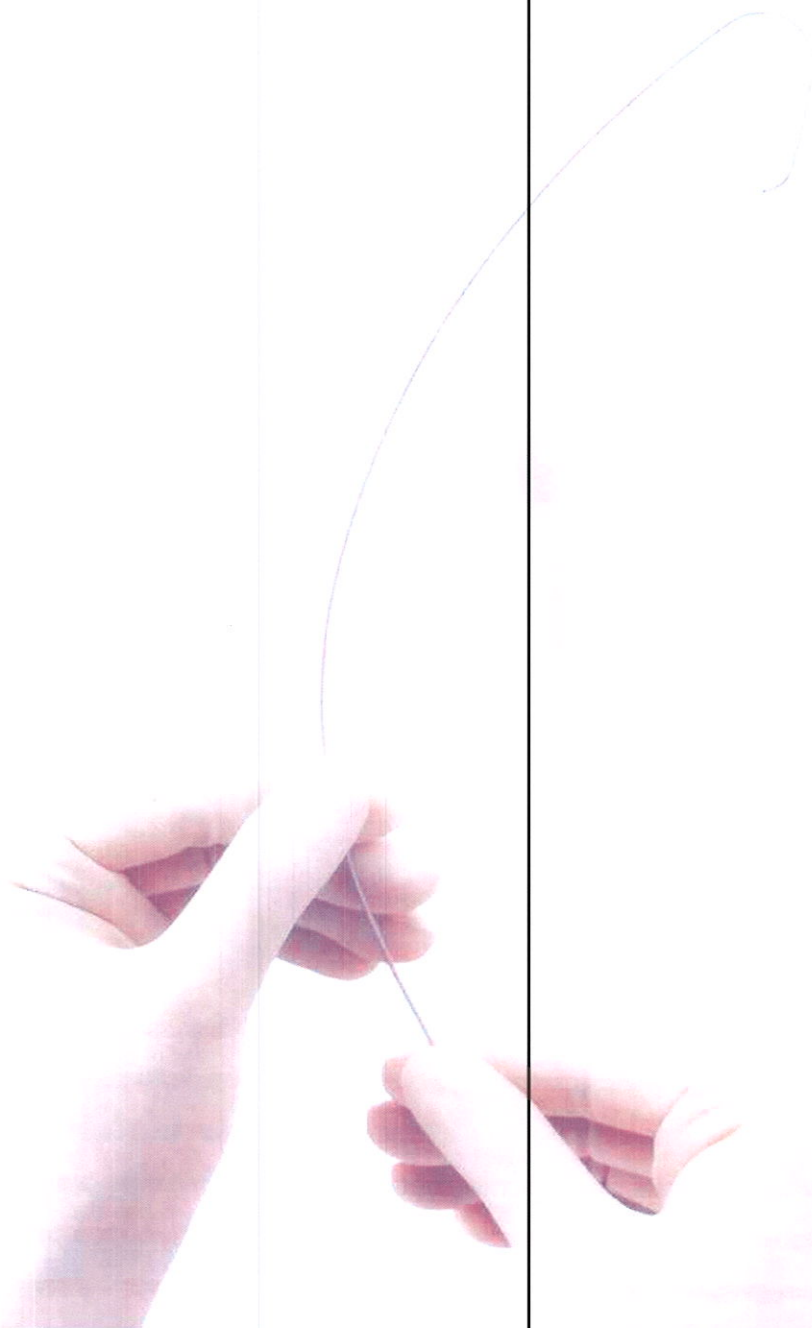
45 phlebo posija



Angiographic catheter for cardiac application

OUTLOOK[®]

The features you want,
right in your hands



Angiographic and Interventional Systems

 **TERUMO[®]**

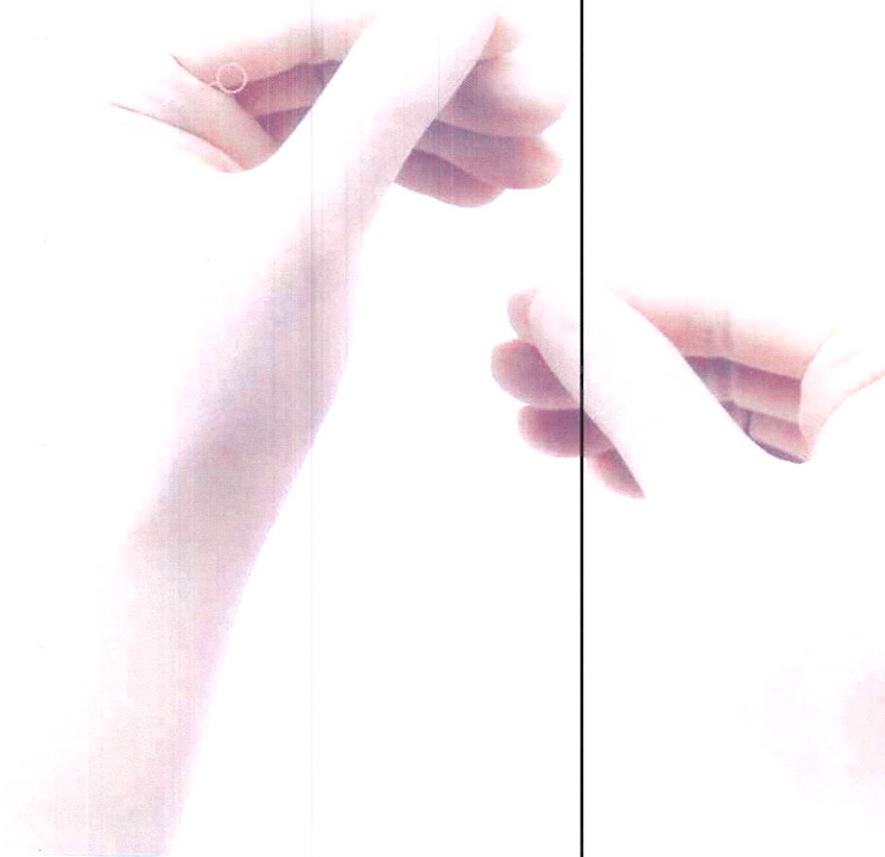
We keep life flowing



4 Fr.

It's simple: Terumo's **Outlook**[®] set new standards for catheter design and performance. Outstanding features mean superior torque control, minimized damage to blood vessel walls and less invasive angiography procedures, making **Outlook**[®] ideal for routine use.

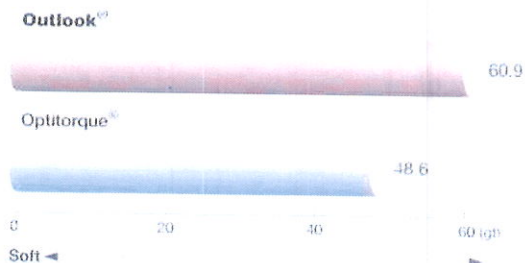
A high flow rate, flexibility and kink-resistance, **yet** thin and strong



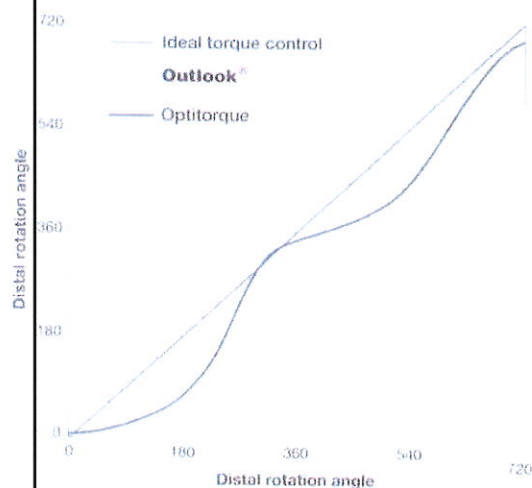
Stiffer Material

- Different types of Polyamide in tube construction mean a stiffer, more durable shaft.
- Superior backup and shape memory.

Comparison of 4 Fr. Shaft Stiffness (37°C water temp.)

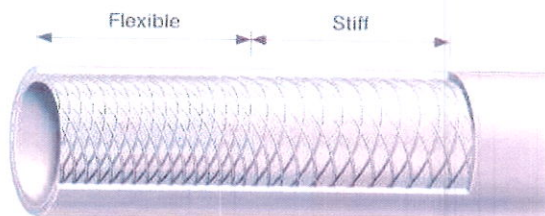


Comparison of 4 Fr. Torque control



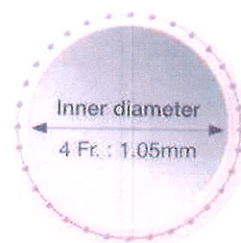
Special Double-Wire Braiding Technology

- Specially designed braiding leads to the proximal shaft.
- Braiding creates gradual flexibility, allowing superb kink-resistance and torque control.



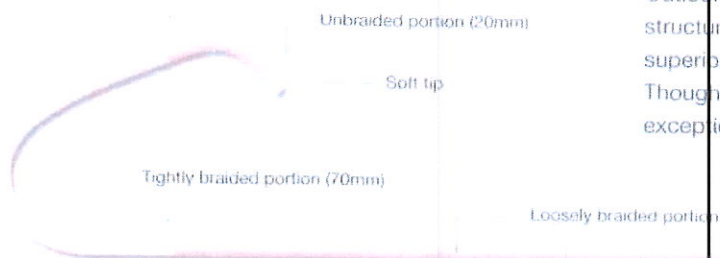
Larger Lumen, Higher Flow

- Ultra-thin wall creates large inner diameter, resulting in higher flow rates.
- 0.038" GW (0.97 mm) compatible.
- Maximum flow rate of 15mL/sec.*
- Pressure limit of 1,200psi (8,274kPa).



* 1.1m length catheter at 37°C (10.6 L/min)

Features up close



Outlook's unique double-braided structure facilitates high kink-resistance, superior backup and flexibility. Though extremely thin, Outlook® has exceptional torque control and pushability.

Single Catheter

Type	Illustration	Material code	Length (cm)	Weight (g)	Friction (Fr)	Tip diameter (mm)	Code of material
Amplatz left		AL-1	100 cm	0	4 Fr / 1.40 mm	0.041" / 1.05 mm	RQ-4AL1000M
		AL-2	100 cm	0	4 Fr / 1.40 mm	0.041" / 1.05 mm	RQ-4AL2000M
		AL-3	100 cm	0	4 Fr / 1.40 mm	0.041" / 1.05 mm	RQ-4AL3000M
Amplatz right		AR-1	100 cm	0	4 Fr / 1.40 mm	0.041" / 1.05 mm	RQ-4AR1000M
		AR-2	100 cm	0	4 Fr / 1.40 mm	0.041" / 1.05 mm	RQ-4AR2000M
		AR-JP	100 cm	0	4 Fr / 1.40 mm	0.041" / 1.05 mm	RQ-4ARJP00M
Bypass		Internal mammary short tip	100 cm	0	4 Fr / 1.40 mm	0.041" / 1.05 mm	RQ-4BPJ00M
		Judkins left	100 cm	0	4 Fr / 1.40 mm	0.041" / 1.05 mm	RQ-4BPJL00M
		Judkins right	100 cm	0	4 Fr / 1.40 mm	0.041" / 1.05 mm	RQ-4BPJR00M
		Internal mammary (type JP)	100 cm	0	4 Fr / 1.40 mm	0.041" / 1.05 mm	RQ-4BPJP00M
Judkins left		JL-3.5	100 cm	0	4 Fr / 1.40 mm	0.041" / 1.05 mm	RQ-4JL3500M
		JL-4.0	100 cm	0	4 Fr / 1.40 mm	0.041" / 1.05 mm	RQ-4JL4000M
		JL-5.0	100 cm	0	4 Fr / 1.40 mm	0.041" / 1.05 mm	RQ-4JL5000M
		JL-6.0	100 cm	0	4 Fr / 1.40 mm	0.041" / 1.05 mm	RQ-4JL6000M
Judkins right		JR-3.5	100 cm	0	4 Fr / 1.40 mm	0.041" / 1.05 mm	RQ-4JR3500M
		JR-4.0	100 cm	0	4 Fr / 1.40 mm	0.041" / 1.05 mm	RQ-4JR4000M
		JR-5.0	100 cm	0	4 Fr / 1.40 mm	0.041" / 1.05 mm	RQ-4JR5000M
Radial		Tiger I	100 cm	1	4 Fr / 1.40 mm	0.041" / 1.05 mm	RQ-4TIG110M
		Tiger II 4.0	100 cm	0	4 Fr / 1.40 mm	0.041" / 1.05 mm	RQ-4TR4000M
		Tiger II 4.0	100 cm	1	4 Fr / 1.40 mm	0.041" / 1.05 mm	RQ-4TR4010M
		Tiger II 5.0	100 cm	0	4 Fr / 1.40 mm	0.041" / 1.05 mm	RQ-4TR5000M
Straight pigtail		BLK 4.0	100 cm	1	4 Fr / 1.40 mm	0.041" / 1.05 mm	RQ-4BLK410M
		-	110 cm	8	4 Fr / 1.40 mm	0.041" / 1.05 mm	RQ-4SP0081M
		-	90 cm	8	4 Fr / 1.40 mm	0.041" / 1.05 mm	RQ-4SP0089M
		-	65 cm	8	4 Fr / 1.40 mm	0.041" / 1.05 mm	RQ-4SP008GM
Angled pigtail		-	65 cm	4	4 Fr / 1.40 mm	0.041" / 1.05 mm	RQ-4SPS04GM
		145° (5.5 cm)	110 cm	8	4 Fr / 1.40 mm	0.041" / 1.05 mm	RQ-4AP4581M
		155° (5.5 cm)	110 cm	8	4 Fr / 1.40 mm	0.041" / 1.05 mm	RQ-4AP5581M
		2.5 cm	100 cm	0	4 Fr / 1.40 mm	0.041" / 1.05 mm	RQ-4MP2500M
Multipurpose		4.0 cm	100 cm	2	4 Fr / 1.40 mm	0.041" / 1.05 mm	RQ-4MP4020M
		El Gamal 2	100 cm	0	4 Fr / 1.40 mm	0.041" / 1.05 mm	RQ-4MP4100M

Tri-Pack Standard Items - References

Code number	Catheter reference	Type	Tip curve	Length	Sheath size	Fr size
RQ-MK4225M	RO-4JR4000M	Judkins right	4.0 cm	100 cm	0	4 Fr / 1.40 mm
	RQ-4JL4000M	Judkins left	4.0 cm	100 cm	0	4 Fr / 1.40 mm
	RQ-4SP0081M	Straight pigtail		110 cm	8	4 Fr / 1.40 mm
RQ-MK4227M	RO-4JR4000M	Judkins right	4.0 cm	100 cm	0	4 Fr / 1.40 mm
	RO-4JL4000M	Judkins left	4.0 cm	100 cm	0	4 Fr / 1.40 mm
	RO-4AP4581M	Angled pigtail (145°)	5.5 cm	110 cm	8	4 Fr / 1.40 mm

Penta-pack Standard items - References

Code number	Reference catheter type	Introducer (Diameter/Length)	Spring Guide Wire (Diameter/Length)	Spring Mini Guide Wire (Diameter/Length)
RQ-4226B4E42	RQ-4JR4000M / RQ-4JL4000M / RQ-4SP0081M	4 Fr / 100 mm	0.035" (0.89 mm) / 150 cm	0.035" (0.89 mm) / 45 cm
RQ-4227B4E42	RQ-4JR4000M / RQ-4JL4000M / RQ-4AP4561M	4 Fr / 100 mm	0.035" (0.89 mm) / 150 cm	0.035" (0.89 mm) / 45 cm

Spring Gate Wire: Inflexion corded, length = 150 cm, diameter = 3 mm, diameter as indicated

Note: For any other possible item contribution, please contact your favorite local sales office.

TERUMO CORPORATION
11-1, Chiyomatsu 4-chome, Wako,
Saitama 351-8501
Japan Tel: 0422-25-4401
Tel: 81-76-8274-2011
Fax: 81-76-8274-2016

TERUMO EUROPE NV
Hofstraat 20, Zurelo 2, 1510 Zurelo
België
Tel: 32 (0) 28 12 11
Fax: 32 (0) 28 12 13

**TERUMO EUROPE
INTERVENTIONAL SYSTEMS**
Pneum. Appare. Flat System
Transcatheter Biventricular
PAC/ICD Catheters and Leads
Pacemakers
Tel: 01223 99 8146/79
Fax: 01223 998146/79

TERUMO DEUTSCHLAND GmbH
Hauptstrasse 8
D-52760 Eschborn
Germany
Tel. 49-6109-9420-1
Fax: 49-6109-9420-400

LABORATOIRES TERUMO
FRANCE S.A.
11, rue Armand - 15011 Clermont
Fauriel-Bellevue Cedex
Tél. 044 04 94 00 01 - Telex
France
Int. 04 44 04 01 01
Fax 04 44 04 01 01

TERUMO ITALIA SRL
Via Francesco Agnelli - 1-111 Edif.
C/142 Roma IBM
Italy
Tel. Roma: 7.486.14.222
Fax: 06/67.90.90.40

**TERUMO EUROPE
ESPAÑA SL**
Avda. de Juan Carlos I, 100, 1.º planta
Edificio "Torre de la Unión" de
29004-Alajuela de Heredia,
Madrid (Spain)
Tel. 34 91 501 10 10 (9)
Fax 34 91 501 10 10 (9)

TERUMO UK LTD
 Harrogate
 West Yorkshire HG1 2HT
 England
 Tel: +44 (0)1834 769600
 Fax: +44 (0)1834 769601
 Telex: 44141 TRLU GB
 Cable: 44141 TRLU GB

TERUMO EUROPE NV
BENELUX SALES DIVISION
 Pharmaceutiekpark, 5 avenue de l'Europe
 Intersciencepark 340
 B-1303 Sint-Pieters-Woluwe
 Belgium
 Tel.: (32) 27 36 00 00 • Telex: 320100
 Fax: (32) 27 36 00 01 • 069 48 00 00
 Telex: 320100 • 02796 3366 00
 Cable: 320100 • 314 68 00

TERUMO SWEDEN AB
Nya Væder, Bageri 180
Svan Kallad, 1200 18
18 180, 18 180, 18 180
Sweden
Tel: 08 44 18 180
Fax: 08 44 18 180

**MOSCOW REPRESENTATIVE
OFFICE OF TERUMO EUROPE NV**
A. Isakova-Froelich St.
Moscow, Russia 1211018
tel. 7-696-244-3931
fax 7-696-244-3932

TERUMO DEUTSCHLAND GmbH
Zweigvertriebsanstalt Wollfringstr. 32, 40225
Erdreith-Zentrum-RR
D-41746 Wollfringstr. 32
Tel.: +49 (0) 20 430 11 11
Fax: +49 (0) 20 430 11 12

www.bentley.com
 is integrated into
 Manufactured by Bentley
 Corporation
 © 1998 BENTLEY SYSTEMS, INC.